



27X78m<sup>2</sup>

18m

420m<sup>2</sup>,

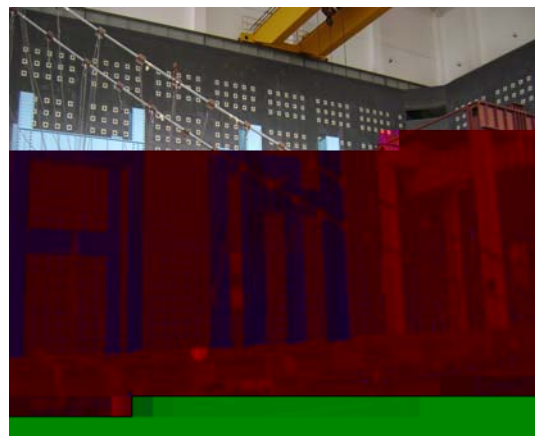
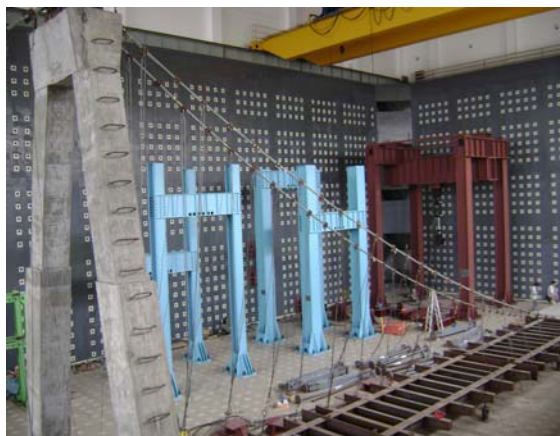
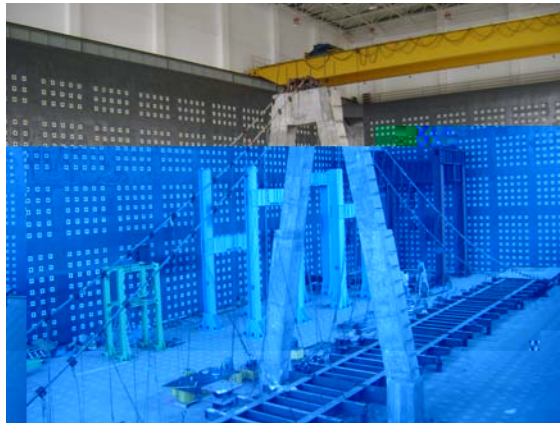
24x36m<sup>2</sup>

L

14m

36m,

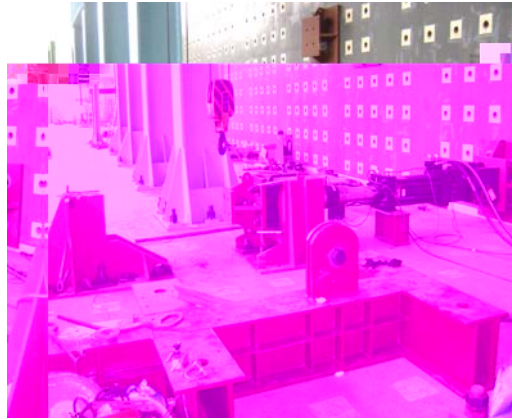
14.6m







03



04



05



06

**MTS**

2

—

14

36

L

14.6

5000KN

2000KN 1000KN

10000KN

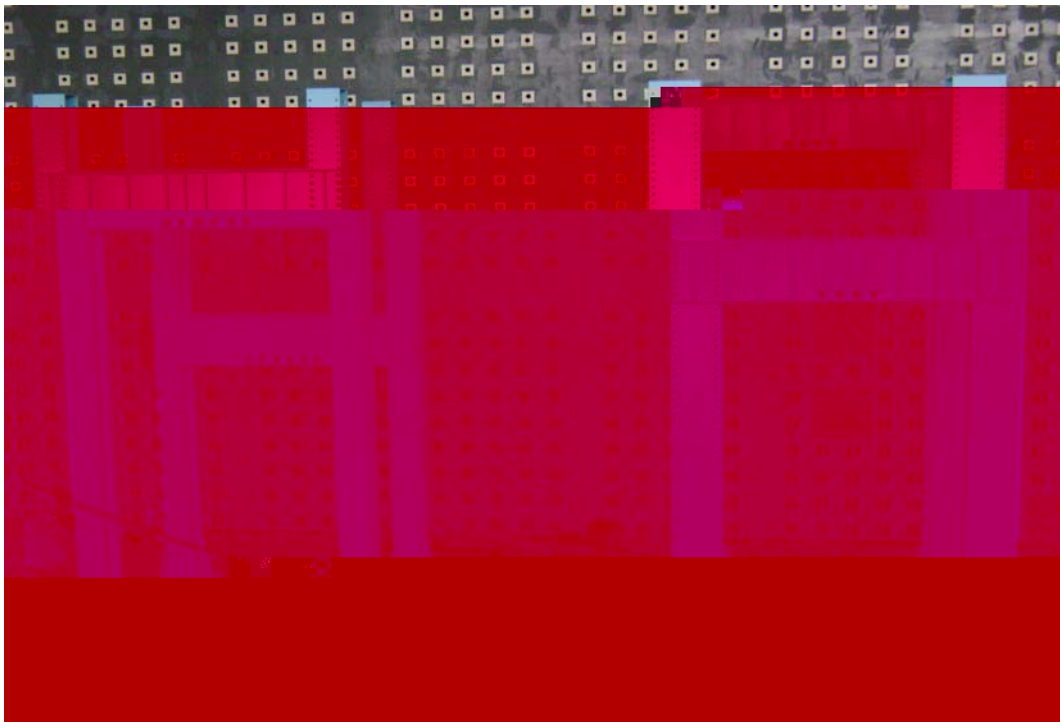
MTS

6300KN

TML



01 10000kN



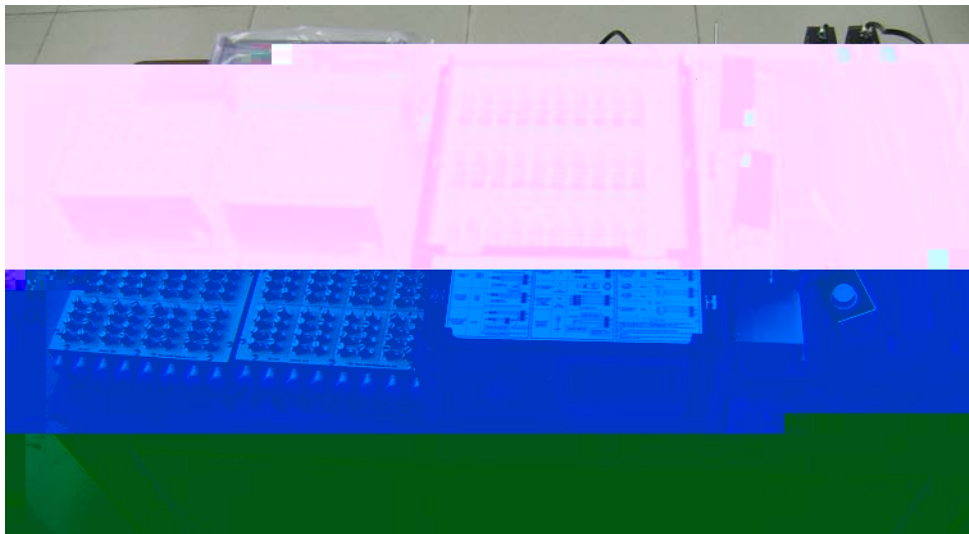
02 1000kN/2000kN





03 5000kN

04



06

3

500KN

MTS

TM



4

3× 2× 1.5m



01



02

5

,

ANSYS10.0 Abaqus6.7

FEAP Opensees

CFX



1

1

2

1

1

2

5

Construction and Building Materials

Journal of Contractual Steel

Research

FRP 46 ,

SCI 4 EI 12

5

1 2

1

2010-04~

FRP RC

:

(1) , FRP ,  
2009.1~2012.1, 10802023

(2) , , 2008.10~2011.10  
2008B010600011

(3) FRP RC  
2009 1 ~2010 12

**510006**

**TEL +8615915805955 +862039322538**